



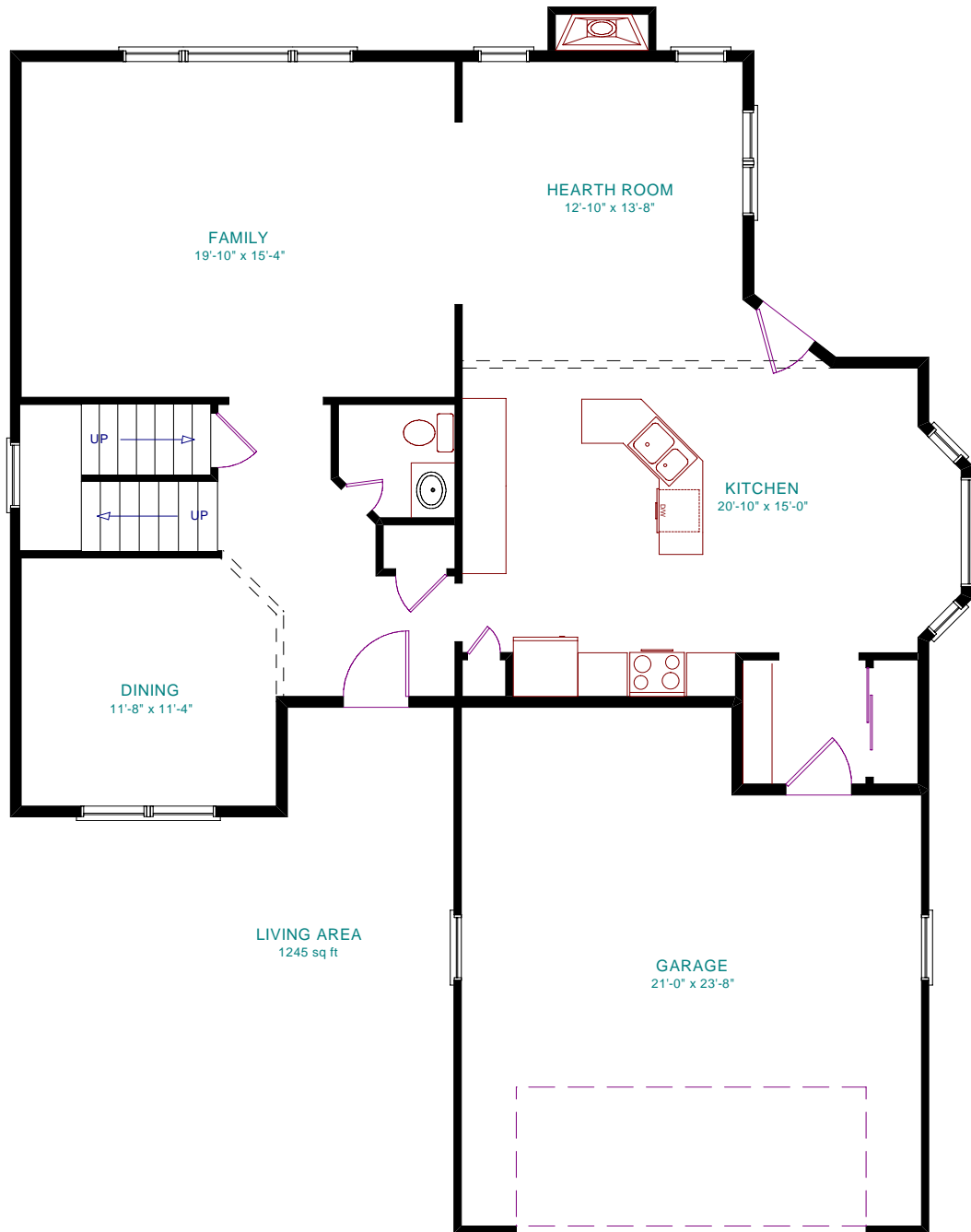
### **THE PORTSMOUTH**

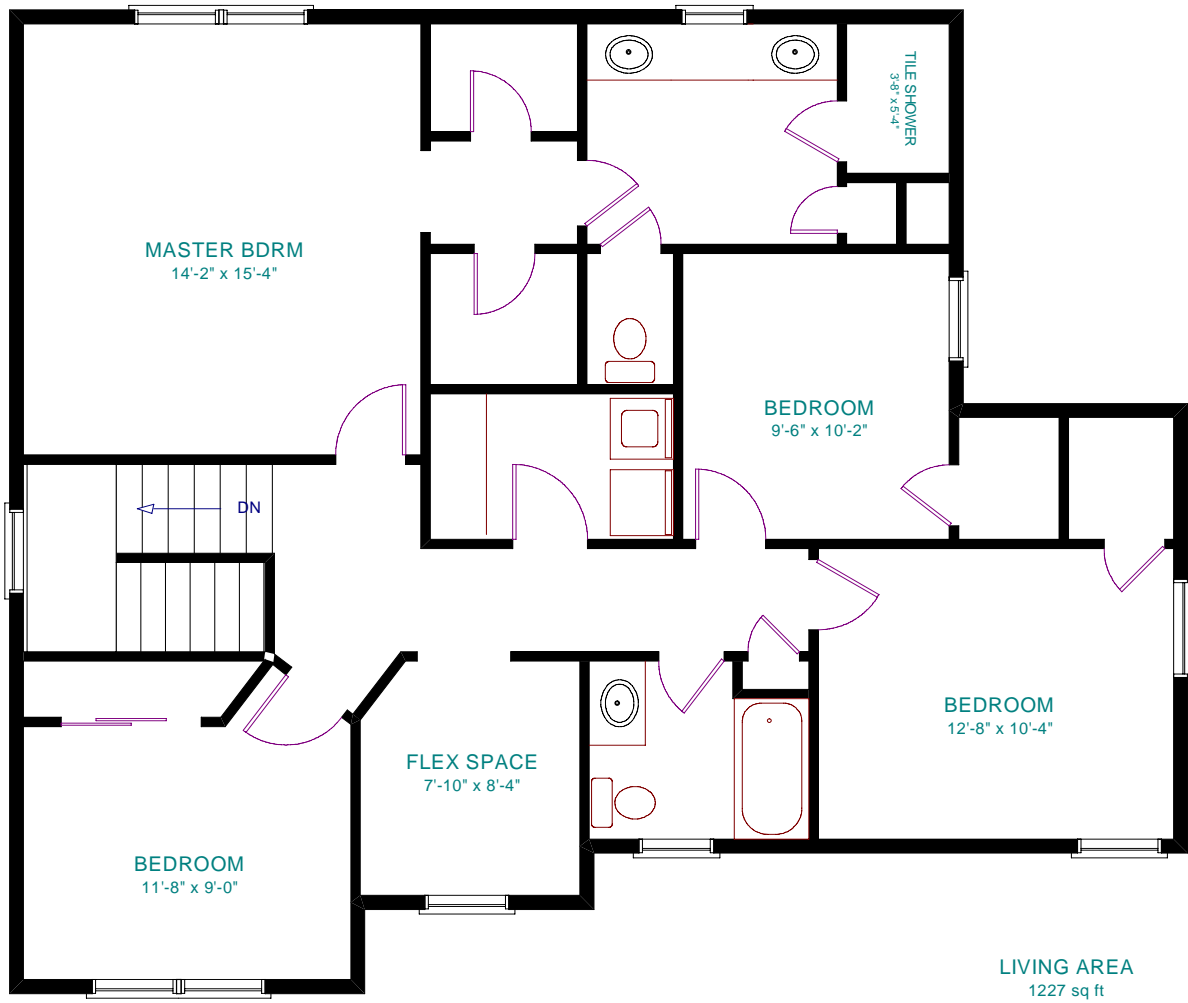
#### **321 Sunningdale Rise – Lot 115 Sunningdale Meadow**

- Approx. 2472 SF, 4 bedrooms, 2 ½ baths
- Energy Star labeled home
- 9' ceilings first floor
- Cherry kitchen with island breakfast bar, recessed and under cabinet lighting, granite countertops, oak floors
- Dinette bay provides extra space and natural lighting
- Family entry with built-in bench seat
- Hearth Room provides additional family and entertaining space
- Garage storage area
- Rheem high E furnace
- Trim options include crown molding, chair rail & cased openings
- His and her master walk-in closets
- First floor laundry
- Luxury master bath with large custom tile shower, 7' vanity with two sinks, private water closet
- 10-year insured warranty
- 60 years of Schantz experience and dedication

*The Portsmouth is available with a variety of options and floor plans. Please consult a sales representative for additional information. Pricing, options and floor plans are subject to change without notice.*







Floor plans, dimensions and photographs or illustrations are for presentation purposes only. Actual construction may vary.  
COPYRIGHT © 2007 SCHANTZ HOMES, INC.