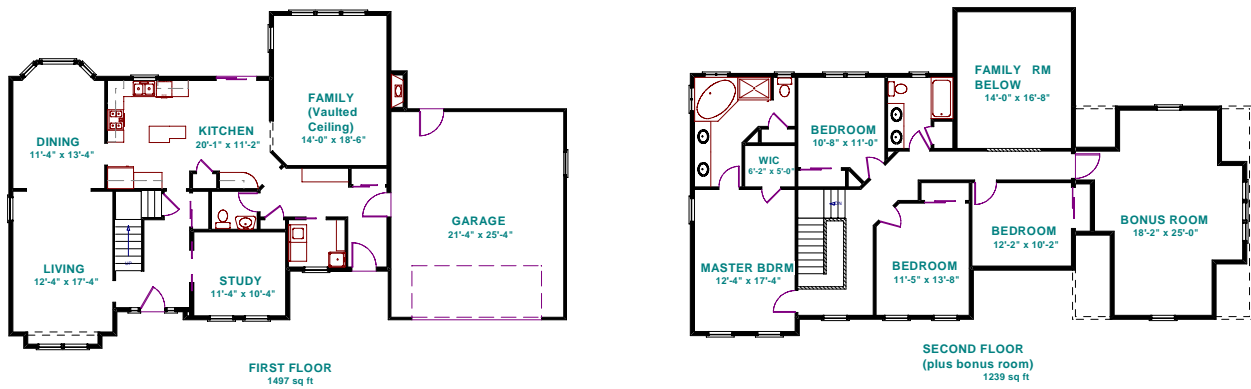




THE WILMINGTON



The Wilmington is available with a variety of options and floor plans. Please consult a sales representative for additional information. Pricing, options and floor plans are subject to change without notice.



4029 St. Paul Blvd. * Rochester, NY 14617 * 585-342-2240 * www.schantzhomes.com

Floor plans, dimensions and photographs or illustrations are for presentation purposes only. Actual construction may vary.
 COPYRIGHT © 2004 SCHANTZ HOMES, INC.
 COPYRIGHT © 2000 - Patrick J. Morabito, AIA Architect